

EZPanel 6" Mono Slim Bezel Panels

6" Monochrome EZPanel - Slim Bezel (5.7" STN)

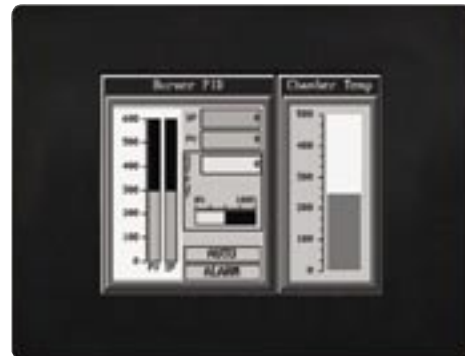
EZPanel Enhanced's 6" slim bezel panels have a 5.7" diagonal touch screen with 320x240 pixel resolution. These panels have an STN LCD (liquid crystal display) with 16 shades of gray. EZPanel enhanced are available in 2 models:
 1) Reduced Memory, not expandable, no network cards, 48 touch cells
 2) Full memory, expandable, all network option cards, 192 touch cells

All these panels have a very low slim profile along with a smaller footprint on enclosures.

6" Mono models feature:

- 5.7" diagonal mono STN LCD
- 16 shades of gray
- NEMA 1, FDA compliant
- 320x240 pixel resolution
- 140 nits brightness
- 25,000 hour expected bulb half-life
- 1/4" gasket and four DIN mounting clips for NEMA 1
- 2.3" (59.0mm) installed depth
- Has all EZPanel Enhanced objects
- Has all 4,000 Library symbols
- Programmed with either EZPanel Enhanced software or EZTouch Programming software

See the different communication interface options available in the charts to the right



Model Number	Interface
EZP-S6M-ES	EZPLC only
EZP-S6M-RS	All serial drivers (non-expandable)

Panels with Reduced Features offer:

- 256K RAM, not expandable
- No Ethernet card support
- 48 touch cells (8x6)

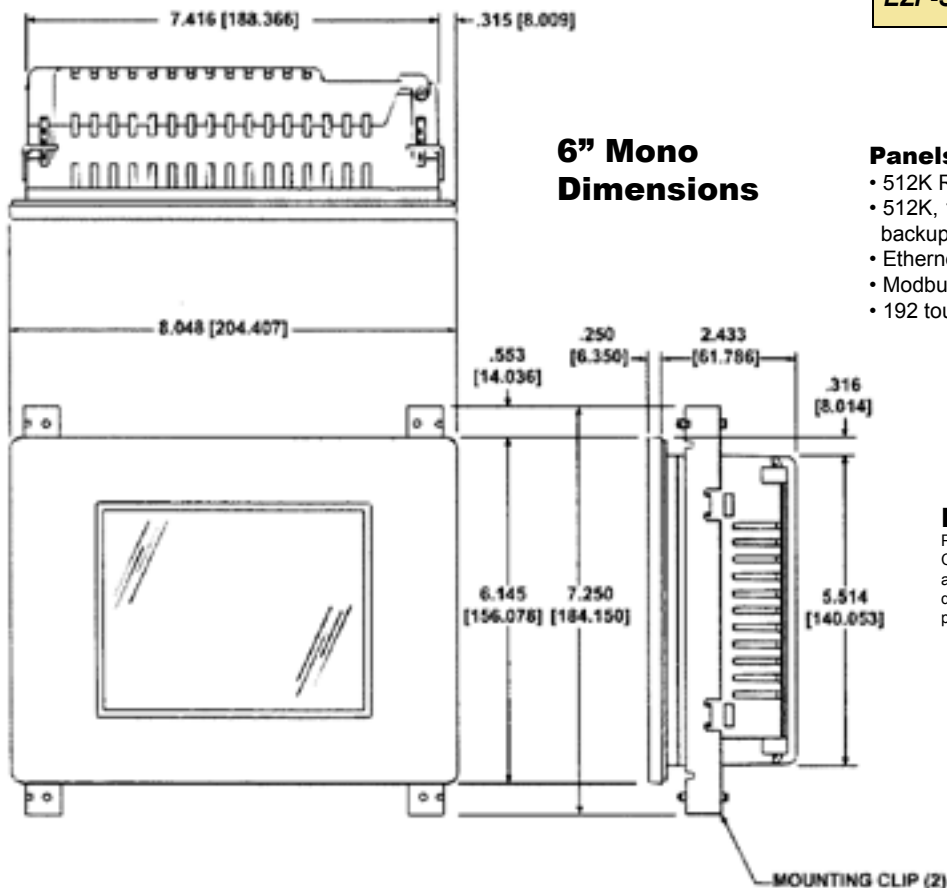
Model Number	Interface
EZP-S6M-FS	All serial drivers and accepts optional Ethernet and network cards
EZP-S6M-FSD	DeviceNet
EZP-S6M-FSE	AB Ethernet I/P
EZP-S6M-FSH	DH+, Remote I/O
EZP-S6M-FSM	Modicon MB+
EZP-S6M-FSP	Profibus
EZP-S6M-FST	Modbus TCP/IP
EZP-S6M-FSC	CCLink
EZP-S6M-FSU	Universal Ethernet drivers - DF1, I/P, Modbus TCP/IP, SRTP

Panels with Full Memory offer:

- 512K RAM expandable to 1.5MB
- 512K, 1MB or 2MB option flash card for memory backup
- Ethernet card optional (EZ-ETHERNET)
- Modbus TCP/IP card optional (EZ-ETHERPLUS)
- 192 touch cells (16x12)

Note

Please note that the touchpanels that are rated NEMA 1 FDA Compliant can handle typical NEMA 4, 4x environment such as water seepage or hosedown. The only reason these panels do not have NEMA 4, 4x rating is because the FDA Compliant plastic material is not UL approved for NEMA 4 flammability.



6" Mono Dimensions